

- **GRAND ONE – Plan of development works to be executed:**

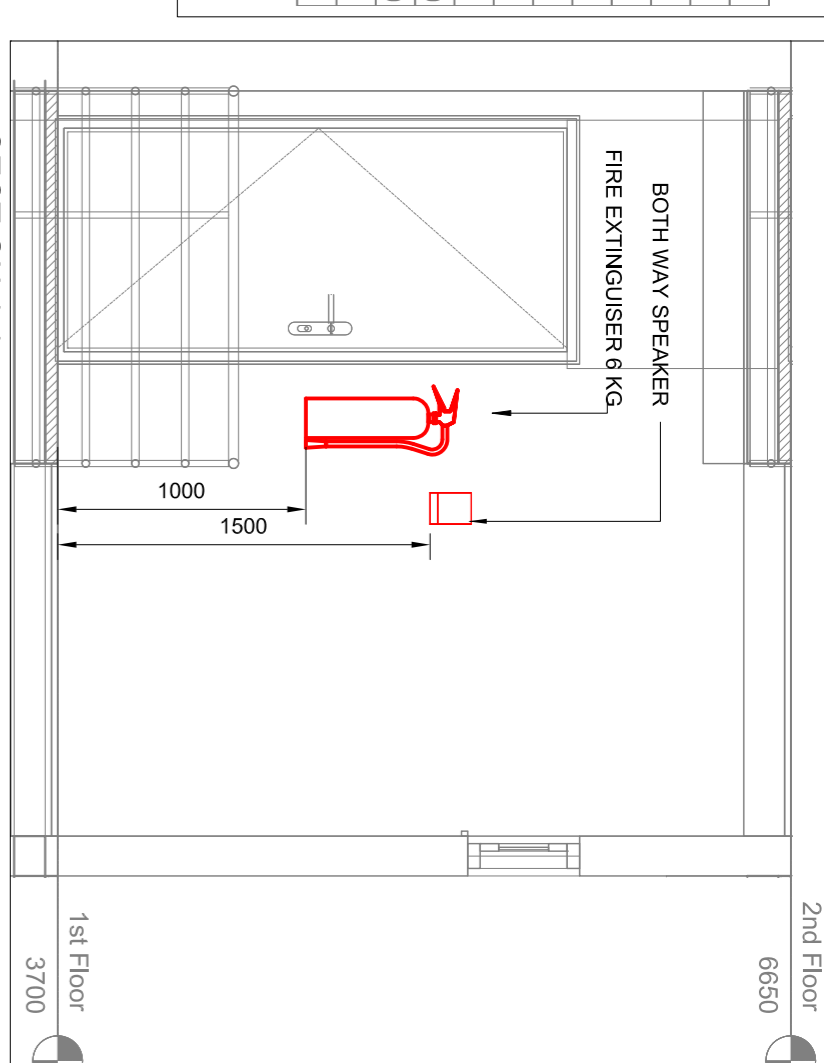
- 8 Clusters, 24 Towers (3 Towers / Cluster), 1 Tower = Stilt + 14 floor levels
- Total No of Units = 2,343 Nos , 7 Units per typical floor level (1 No - 1BHK, 4 Nos – 2BHK & 2 Nos - 3BHK)
- Club
- Swimming Pool
- Landscaped garden for the common use of the owners and occupants of the Said Building
- Children Play area
- Complex Entry / Exit , 4 Gates (2 entry & 2 exit)
- Security Booth
- Parking Spaces for Residents
- Parking Spaces for Visitors
- Drive ways & Walk ways
- Drinking Water Facilities
 - a) Water dispensers will be provided at strategic common locations like club and community halls.
 - b) Potable water will be supplied in all dwelling units.



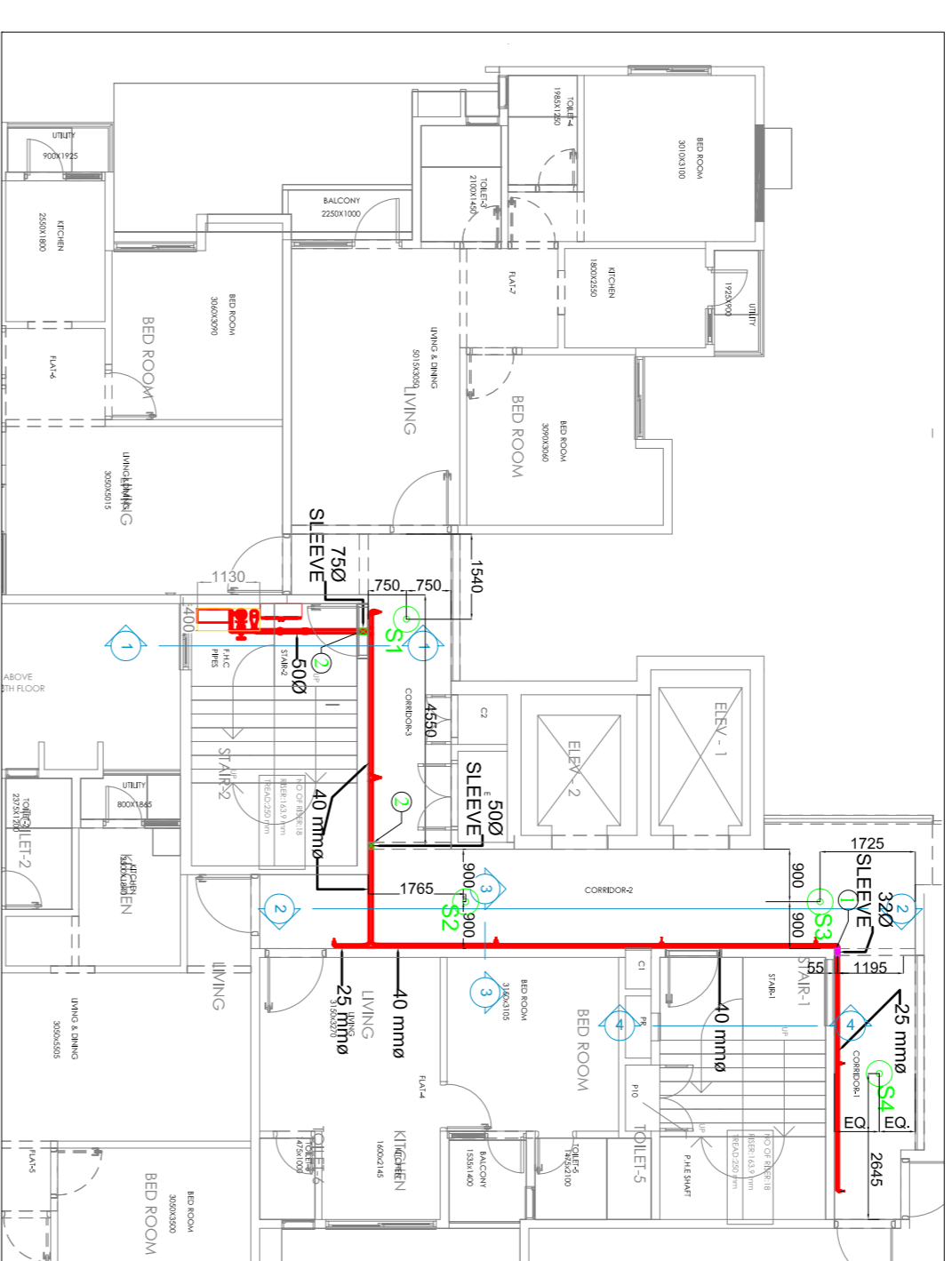
A TYPICAL FLOOR PLAN FIRE LAYOUT
1 : 200

S.No.	Item Description	Mounting Height from FFL	Distance From Nearest wall
Smoke Detectors - (Refer (B) - F/F Detail drawing)			
1	S1	On ceiling	X=1540 mm, Y=750 mm
2	S2	On ceiling	X=900 mm, Y=1725 mm
3	S3	On ceiling	X=900 mm, Y=1725 mm
4	S4	On ceiling	X=2645 mm, Y=1725 mm
Note: All Smoke detectors will be placed in between two light points.			
Manual Call Points/Hooters / Two way speaker - Refer (C) Fire alarm details			
1	M	1200 mm	1360
2	H	2000 mm	1360
3	2 way Speakers	1500 mm	1360
Note: All Sleeves for sprinklers will be running at a height of 2675 mm. from FFL on wall.			

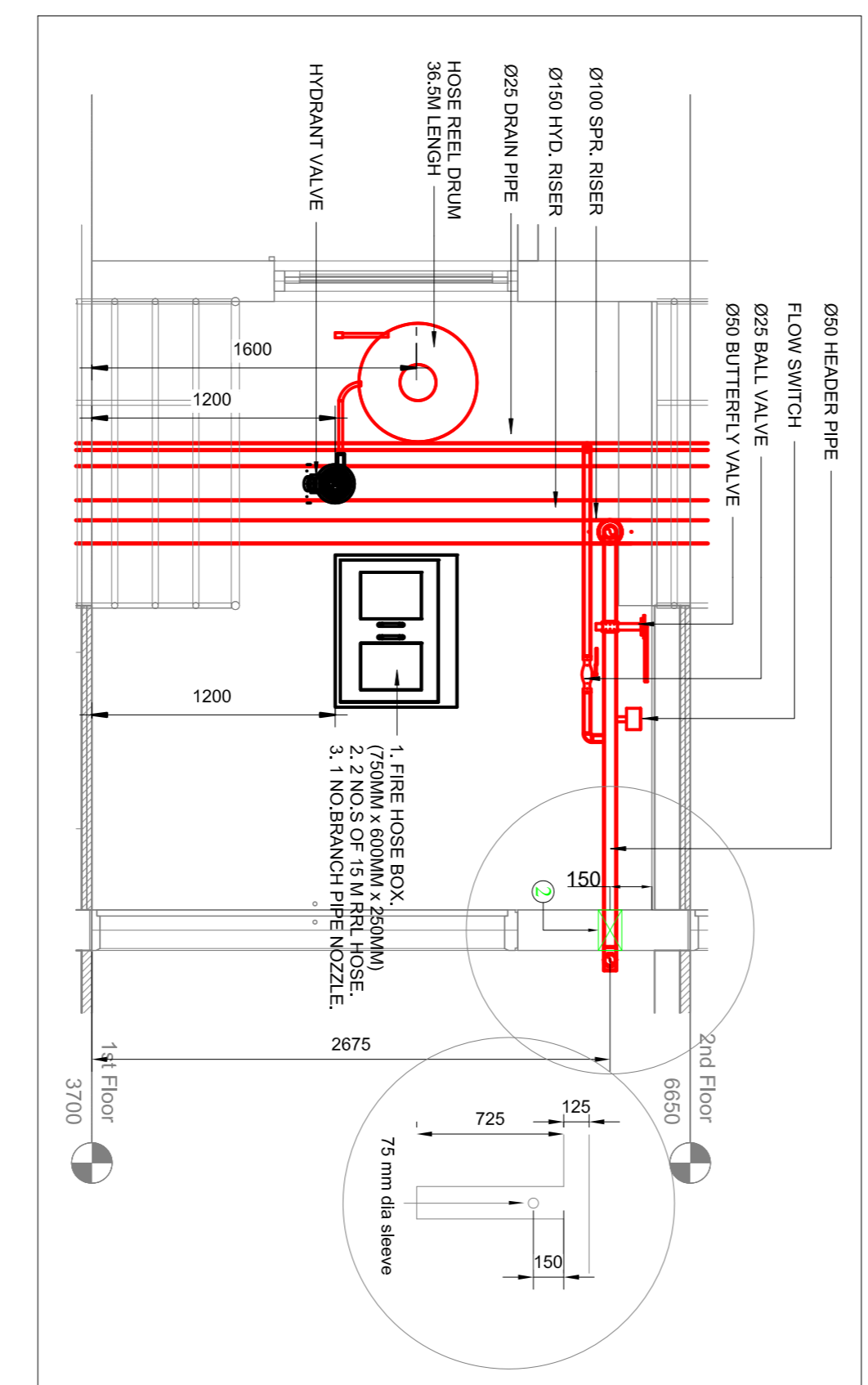
6 LEGEND



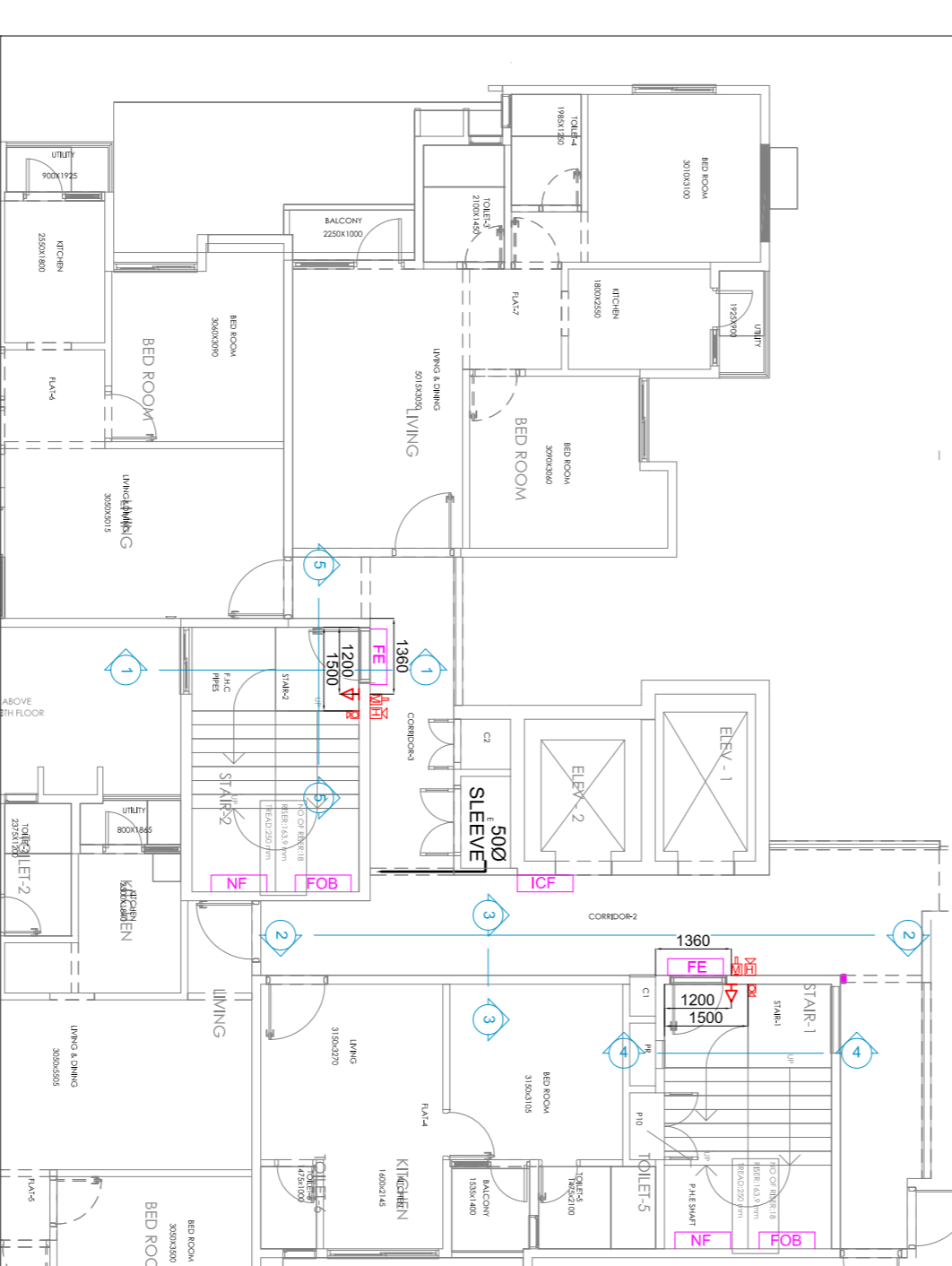
4 SECTION 4-4
1 : 25



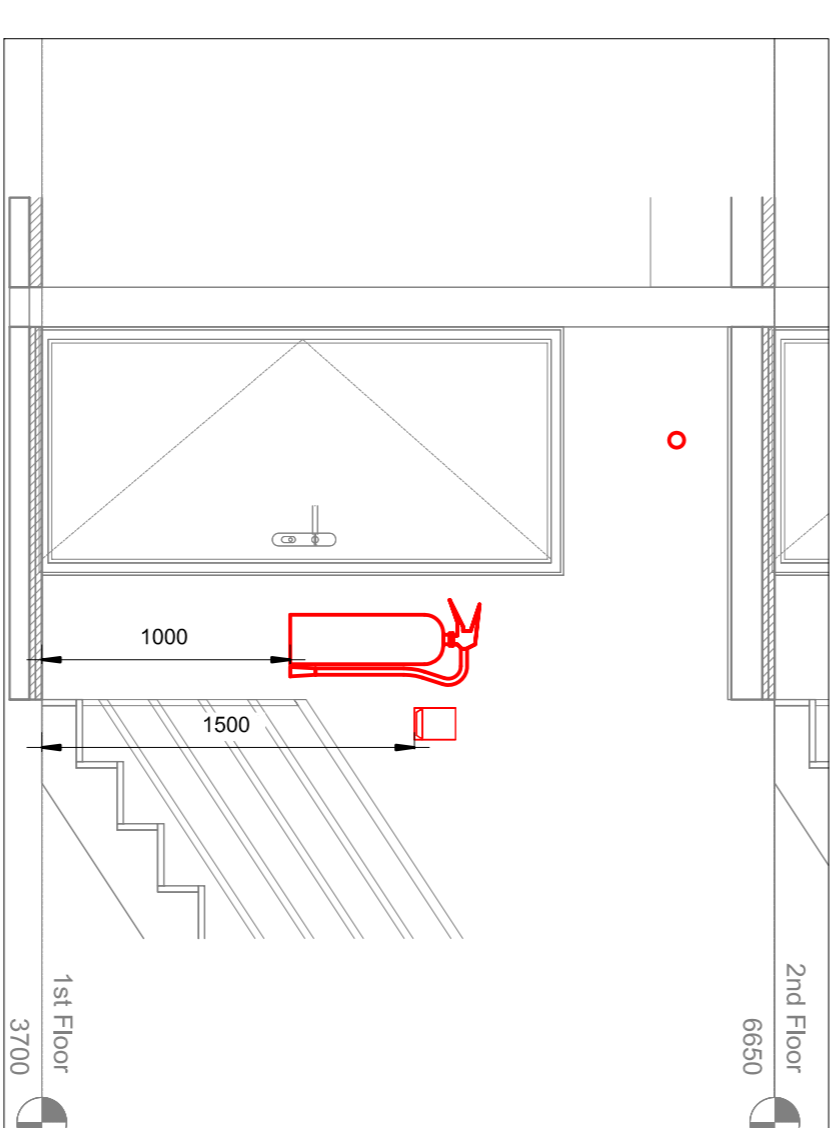
B FIRE FIGHTING DETAIL
1 : 100



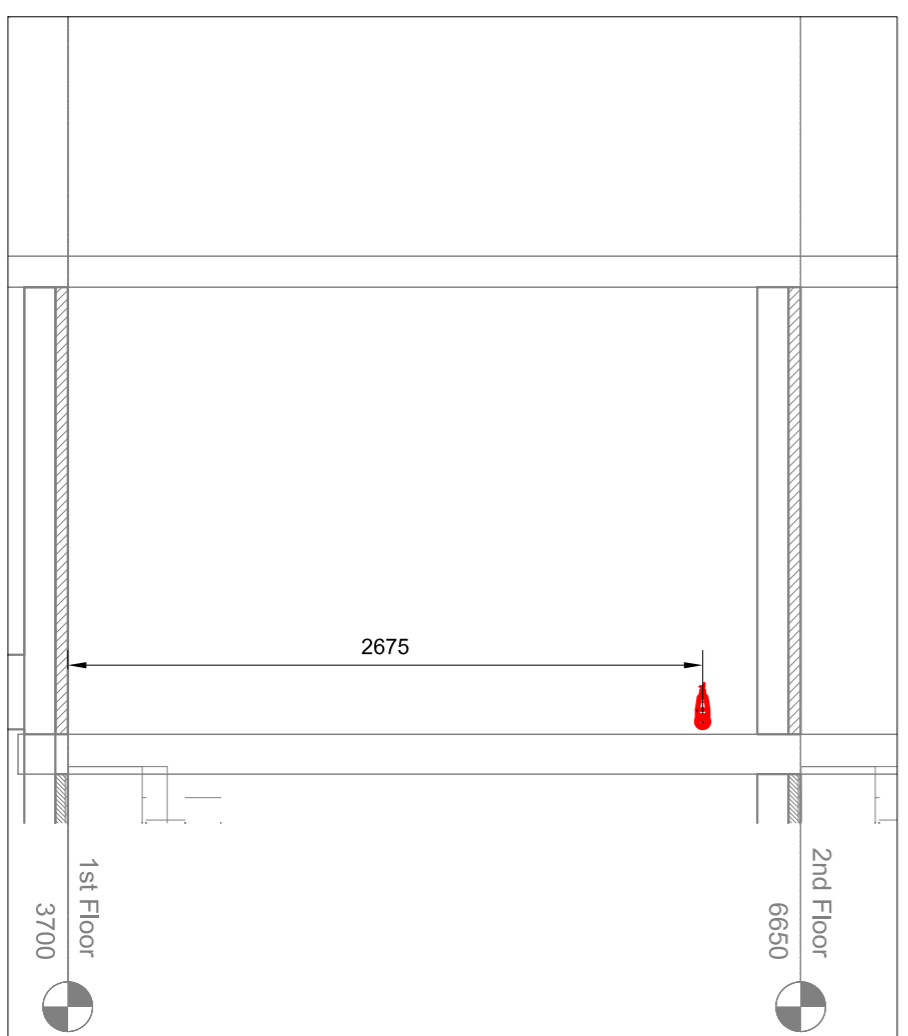
1 SECTION 1-1
1 : 25



C FIRE ALARM DETAIL
1 : 100

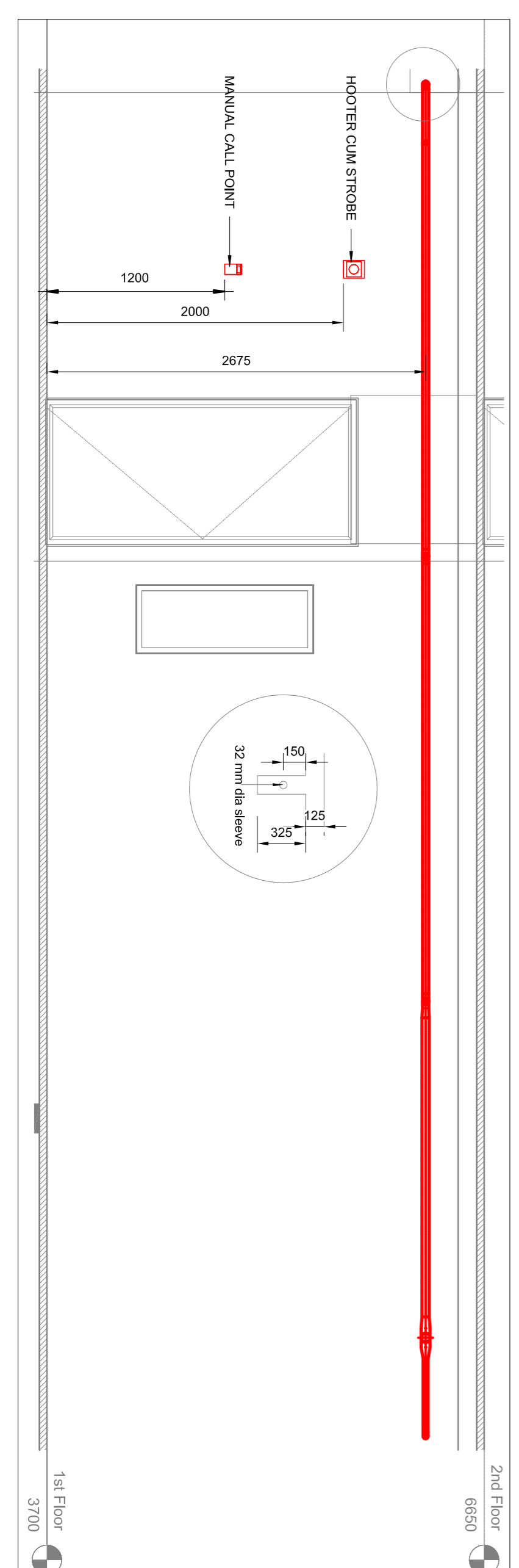


5 SECTION 5-5
1 : 25



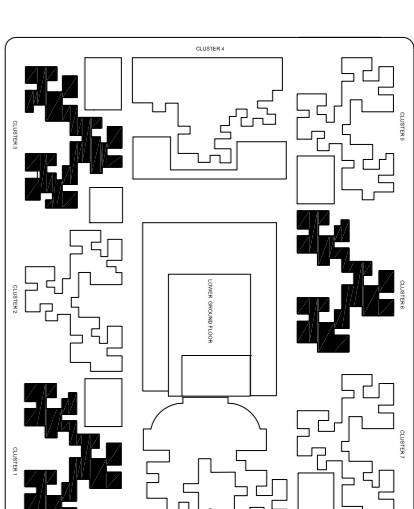
3 SECTION 3-3
1 : 25

FIRE FIGHTING LEGEND	
1.	☐ BOTH WAY SPEAKER
2.	☐ HOOTER CUM STROBE
3.	☐ MANUAL CALL POINT
4.	⊙ SMOKE DETECTOR
5.	⚠ ABC FIRE EXTINGUISHER/KG
6.	⊖ FIRE EXT STORAGE @ 2200 MM FROM FFL
7.	⊖ NO. OF FLOORS STORAGE @ 2200 MM FROM FFL
8.	⊖ FIRE ORDER BOARD STORAGE @ 600 MM FROM FFL
9.	⊖ INCASE OF FIRE STORAGE @ 2200 MM FROM FFL
10.	⊖ SIDE WALL SPRINKLER
11.	⊖ 50MM SLEEVE
12.	⊖ 80MM SLEEVE



2 SECTION 2-2
1 : 25

KEY PLAN:



- GENERAL NOTES:
1. ALL DIMENSIONS ARE IN MILLIMETERS (MM).
 2. THE DRAWING SHALL BE READ NOT SCALED EITHER IN PART OR IN FULL (N/C).
 3. THIS DRAWING SHOULD BE READ IN CONJUNCTION WITH RELEVANT ARCHITECTURAL, STRUCTURAL AND ALL SERVICES DRAWINGS.
 4. ANY DISCREPANCY SHOULD IMMEDIATELY BE BROUGHT TO THE NOTICE OF THE CONSULTANTS BEFORE EXECUTION.

REFERENCE DRAWINGS :

NO.	DESCRIPTION	DATE	BY
1	REVISED AS PER M.O.M 17/18/2018		
REVISIONS			

PROJECT :



CLIENTS : BENGAL SHRIRAM

ARCHITECTS :

8/20 CHITRE, 5th Floor, Road No. 47/2, Connaught Place, Ring Road, New Delhi, India. Phone: +91 11 2610 2000. Email: info@architects.com

MEP CONSULTANTS :

UNITED SERVICE CONSULTANTS
#551, 2nd cross, 60 Feet Road Near Kalamandira, Bengaluru, Karnataka, India. Phone: +91 80 8000 0042. Email: info@unitedserviceconsultants.com

GOOD FOR CONSTRUCTION

DRAWING TITLE :

CLUSTER 1,3,6
TYPICAL FLOOR & SLEEVE DETAILS
FIRE FIGHTING LAYOUT
(1 TO 14TH FLOOR)

DRAWN	PP	DESIGNED	AP
CHECKED	AP	APPROVED	AP
DATE	03.05.2018	SCALE	AS SHOWN
DRAWING NUMBER	USC-C-009	F RES	TV G 0402 0